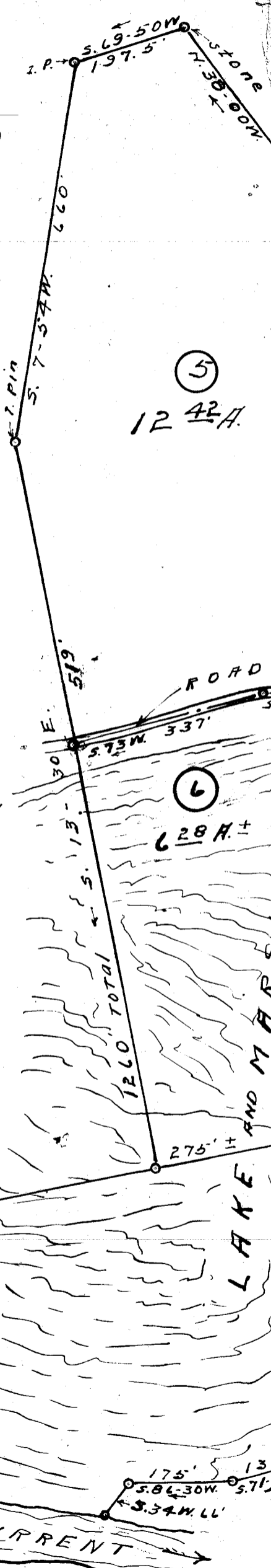


PROPERTY KNOWN AS FREEMAN GAMBRELL LAND

LOCATED NEAR HUNTS BRIDGE
Greenville County S.C. May. 1937
Scale 1" = 200'



"Note" Lots No's. 1 and 2 surveyed by W.J. Riddle
Lines on other Lots from road to lake run by "
Other lines copied from old plat and estimated

plat Revised Aug. 11-1937
W.J.R.

